



Customer: Extraxit LLC
Customer Sample ID: 4800mg Horse Tincture
Laboratory Number: 20E0057-05

Density: 0.9506



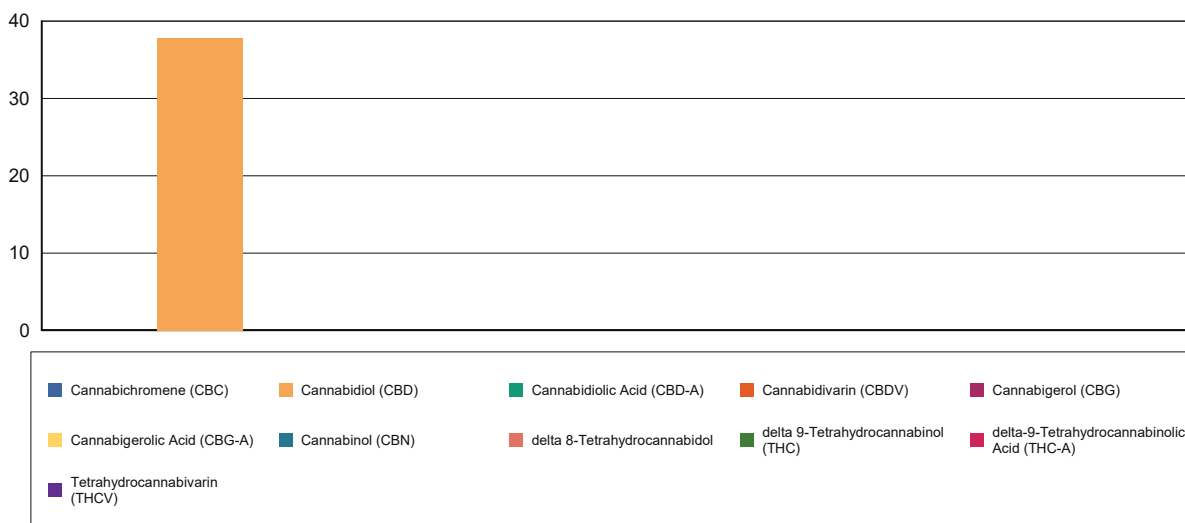
Cannabinoid Profile

Extraction Technician: DF
Analytical Chemist: CB

Extraction Date(s)	Analysis Date(s)
5/8/2020	5/8/2020

Cannabinoids (HPLC)		Results	
	LOD (mg/mL)	%	mg/mL
Cannabidiarin (CBDV)	<0.10		
Cannabidiolic Acid (CBD-A)	<0.10		
Cannabigerolic Acid (CBG-A)	<0.10		
Cannabigerol (CBG)	<0.10		
Cannabidiol (CBD)		3.78	37.8
Tetrahydrocannabivarin (THCV)	<0.10		
Cannabinol (CBN)	<0.10		
delta 9-Tetrahydrocannabinol (THC)	<0.10		
delta 8-Tetrahydrocannabinol	<0.10		
Cannabichromene (CBC)	<0.10		
delta-9-Tetrahydrocannabinolic Acid (THC-A)	<0.10		
Cannabinoids Total		%	mg/mL
Max Active THC		0.00	0.00
Max Active CBD		3.78	37.80
T.Active Cannabinoids		3.78	37.80
Total Cannabinoids		3.78	37.80
Ratios			
NA:1 CBD to THC		0.00:1 THC to CBD	

Cannabinoid (mg/mL)



Reporting Limits will vary based on sample extraction weight used for the analysis.

Altitude Consulting, LLC utilizes NIST traceable Reference Standards and Certified Reference Material to calibrate analytical instruments along with proven analytical methods. The methods are applied in the most ethical manner following good laboratory practice guidelines. The results of this report are based solely on the sample submitted and cannot be reproduced.