



Customer: Extraxit LLC
Customer Sample ID: Junker FS Tincture 1500mg, Batch 1
Laboratory Number: 20E0130-01

Density: 0.9508



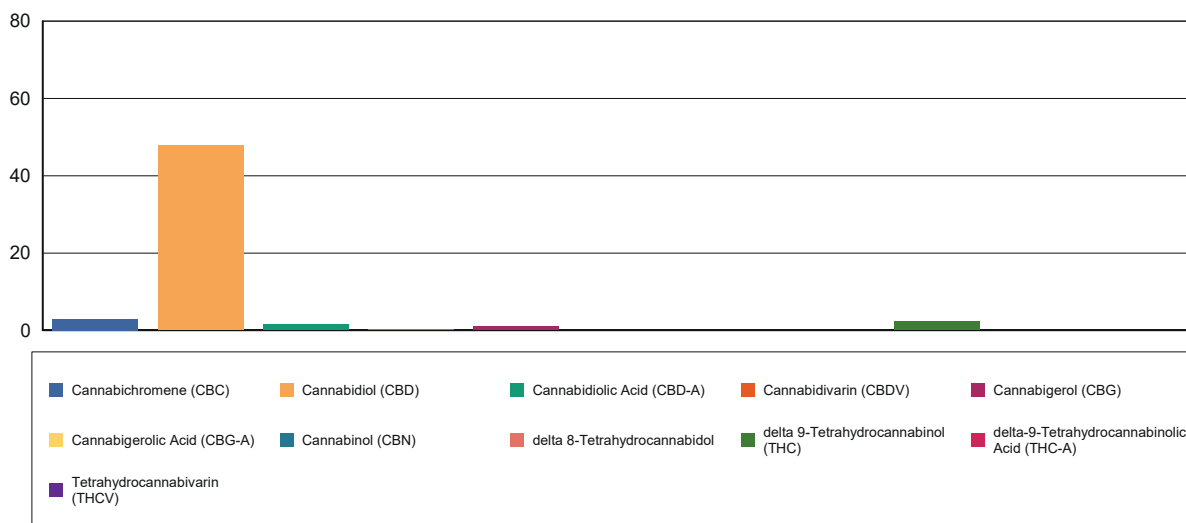
Cannabinoid Profile

Extraction Technician: DF
Analytical Chemist: CB

Extraction Date(s)	Analysis Date(s)
5/15/2020	5/15/2020

Cannabinoids (HPLC)		Results	
	LOD (mg/mL)	%	mg/mL
Cannabidivarin (CBDV)		0.03	0.259
Cannabidiolic Acid (CBD-A)		0.14	1.44
Cannabigerolic Acid (CBG-A)	<0.090		
Cannabigerol (CBG)		0.10	1.03
Cannabidiol (CBD)		4.79	47.9
Tetrahydrocannabivarin (THCV)	<0.090		
Cannabinol (CBN)	<0.090		
delta 9-Tetrahydrocannabinol (THC)		0.22	2.23
delta 8-Tetrahydrocannabinol	<0.090		
Cannabichromene (CBC)		0.29	2.93
delta-9-Tetrahydrocannabinolic Acid (THC-A)	<0.090		
Cannabinoids Total		%	mg/mL
Max Active THC		0.22	2.23
Max Active CBD		4.92	49.16
T.Active Cannabinoids		5.41	54.10
Total Cannabinoids		5.58	55.80
Ratios			
22.08:1 CBD to THC		0.05:1 THC to CBD	

Cannabinoid (mg/mL)



Reporting Limits will vary based on sample extraction weight used for the analysis.

Altitude Consulting, LLC utilizes NIST traceable Reference Standards and Certified Reference Material to calibrate analytical instruments along with proven analytical methods. The methods are applied in the most ethical manner following good laboratory practice guidelines. The results of this report are based solely on the sample submitted and cannot be reproduced.