



Customer: **Extraxit LLC**
Customer Sample ID: **Colton #6 Spent (re: batch 4)**
Laboratory Number: **19J0040-01**



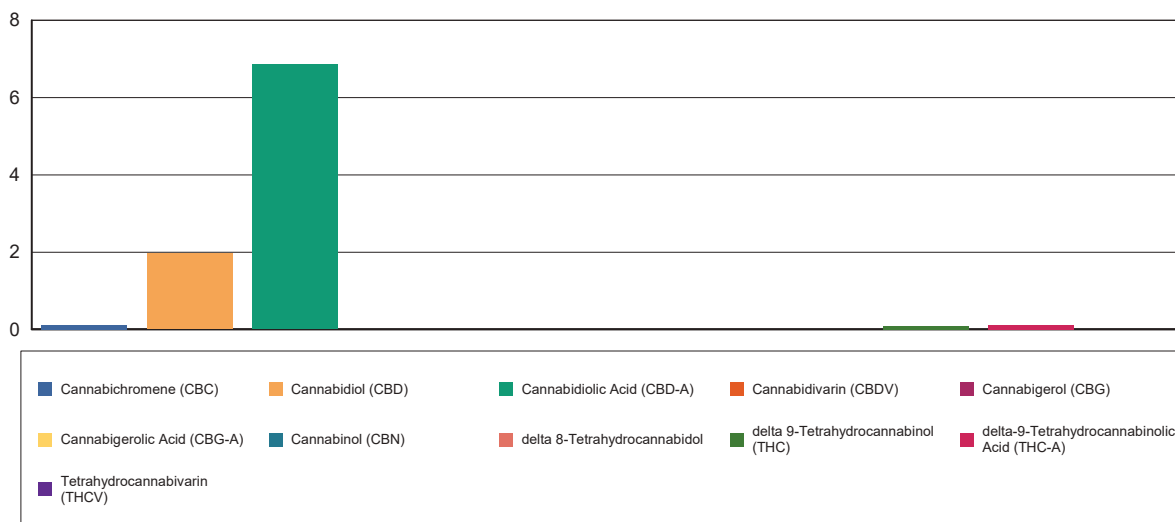
Cannabinoid Profile

Extraction Technician: DF
Analytical Chemist: GB

Extraction Date(s)	Analysis Date(s)
10/2/2019	10/3/2019

Cannabinoids (HPLC)		Results	
	LOD (mg/g)	%	mg/g
Cannabidiarin (CBDV)	<0.090		
Cannabidiolic Acid (CBD-A)		0.68	6.8
Cannabigerolic Acid (CBG-A)	<0.090		
Cannabigerol (CBG)	<0.090		
Cannabidiol (CBD)		0.20	2
Tetrahydrocannabivarin (THCV)	<0.090		
Cannabinol (CBN)	<0.090		
delta 9-Tetrahydrocannabinol (THC)		0.009	0.09
delta 8-Tetrahydrocannabinol	<0.090		
Cannabichromene (CBC)		0.01	0.1
delta-9-Tetrahydrocannabinolic Acid (THC-A)		0.01	0.1
Cannabinoids Total		%	mg/g
Max Active THC		0.02	0.19
Max Active CBD		0.80	7.97
T.Active Cannabinoids		0.22	2.18
Total Cannabinoids		0.91	9.14
Ratios			
42.57:1 CBD to THC		0.02:1 THC to CBD	

Cannabinoid (mg/g)



Altitude Consulting, LLC utilizes NIST traceable Reference Standards and Certified Reference Material to calibrate analytical instruments along with proven analytical methods. The methods are applied in the most ethical manner following good laboratory practice guidelines. The results of this report are based solely on the sample submitted and cannot be reproduced.